

# ***The Chronicle***

*April 20. Issue 405*

***Could we be facing LOCKDOWN?***



**Useful information especially for the Vulnerable inside**



# ANDERTON ELECTRICS

*Keeping you wired up.*

- ✓ Free quotations, no obligations
- ✓ Emergency Work – day or night
- ✓ Domestic or Commercial
- ✓ A name you can trust

FREE NO  
OBLIGATION  
QUOTATIONS

Contact James direct on:  
Mobile: **07771 698 151**  
Office: **01582 343 123**

Email: [james@andertonelectrics.co.uk](mailto:james@andertonelectrics.co.uk)

Proud members of  
**Checkatrade.com** **See our feedback on Check a trade**  
Where reputation matters  
[www.checkatrade.com/andertonelectrics](http://www.checkatrade.com/andertonelectrics)



City &  
Guilds



[www.andertonelectrics.co.uk](http://www.andertonelectrics.co.uk)

## ***From the Editor***

As I write this early edition, we are facing an imminent National Lockdown. I'm told by a reliable source that the Prime Minister will announce this on Friday 20th March. Inside this edition is vital village information for support during this unprecedented national emergency.

We have village families self isolating already and we thank them for this vital action. It goes without saying that we should safely keep in contact with vulnerable relatives, friends and neighbours.

The CoronaVirus has also stopped the 'Best Kept Village' competition taking place this year.

On another subject, the 30mph speed restriction sign facing the wrong way at the end of the village beggars belief.

I have received reports of heavy goods lorries leaving The Abbey and the Chicken Farm area and cutting the corners of The Green, turving up the grass. Please keep an eye out for these lazy gits and report further. I have asked the Parish Council rep' to make the necessary protests.

Finally, an apology for the thin mag' last month. I was in Australia with little resources to bring you a proper edition. This month is early and thin too. This is due to the printers closing down from Friday.

Stay well and safe. ***Ed.***

## ***AntiViral Measures taken in Aston Abbotts***

We are aware that one household in Aston Abbotts is self-isolating.

We would stress that coronavirus has not been confirmed and no test has been carried out (tests are not generally available). However, one family member has the

symptoms and so the household is sensibly following government advice and self-isolating for 14 days.

Do not be alarmed by this. It is inevitable that this should happen, but we wanted to make everybody



aware to reinforce the need to heed government advice and take all necessary precautions.

In this case the family's immediate neighbours are looking after food supplies and so the volunteer group should not be needed. However, if you are self-isolating

and you need essential supplies please get in contact with us.

In the meantime, please look after yourselves and heed the government warnings.

Phil Spooner - 07490 093 834

Jane Baylis - 07770 774 515

[cv19@aston-abbotts.co.uk](mailto:cv19@aston-abbotts.co.uk)

## ARE YOU SELF-ISOLATING?

An Aston Abbotts volunteer group will fetch essential food items, fresh milk and bread, and medical prescriptions for anybody forced to self-isolate and stay indoors due to the coronavirus.

If you need medical assistance you should telephone 111, but our village volunteers can ensure that you do not run out of food.

So if you have been told to stay at home and you need food items, even if it is just a fresh pint of milk, you can contact the team using these details:

**By email: [CV19@aston-abbotts.co.uk](mailto:CV19@aston-abbotts.co.uk)**

**By telephone or text: Phil on 07490 093 834 or Jane on 07770 774 515**

This is a worrying time, especially for the elderly in our community, but be assured that there are well over thirty village volunteers ready to provide food assistance.



If you want to be part of the volunteer group please call Phil' or Jane or email (above).

***What's on in April? Bugger all!!***

## ***Garden Waste Collection Suspended***

In this unprecedented situation with coronavirus, we are having to look at prioritising some of our services. We do not make these decisions lightly. Collections of refuse, clinical waste and food will remain a priority throughout and therefore, until further notice, we regret we will be stopping the garden and bulky waste collection services.

Please be reassured that these materials are not hazardous if left for longer than two weeks, and if you wish, you will still be able to take this waste to your nearest [Household Recycling Centre](#) (HRC). While we appreciate that not all residents can travel to an HRC - any that do will help reduce the backlog and allow us to resume normal service more quickly afterwards.

Any residents who are self-isolating, have COVID-19 symptoms or are in an 'at risk' category should not visit HRCs.

We are sorry for any inconvenience this will cause, and once we know when the service can be resumed, for customers receiving the garden waste service, we will be in touch regarding how we plan to compensate you for any loss of service.

## ***Your Emails***

**Hi Pete**, unfortunately the best kept village has been postponed this year due to corona.

**Chris Philips.**

**Hi Pete**

No point in putting the Village Hall diary in the Chronicle for April as most events are cancelled. Can you put the following note in:

We have not included the Village Hall Diary in this Chronicle, as at the time of publication, most regular events such as Pilates, Bingo, Whist, Breakfast Services and Coffee Morning are suspended. If you are not sure if an event you want to attend is still taking place, please get in touch with the organiser. The Hall is still available for hire and so if you want to make a booking or would like any information on the hall,

please contact Liz Barlow  
on 01296 682605 or  
07976 671701 or e mail  
[astonabbottsvillagehall@  
yahoo.com](mailto:astonabbottsvillagehall@yahoo.com)

Thanks Pete

Regards, **Liz**

***Ernie is missing again.***

Shirley Hanlon and Kita's cat Ernie has gone missing again. He was found in a neighbours shed last week. He's not there this time, so once again could you please keep an eye out, and look in your sheds and garages. He's white and grey, quite a big cat, with no collar. Shirley lives on Ross Road and her number is **07817 165 744** if anyone has any information.

Thanks once again. **Shirley**

**The Loose boxes at Church Farm** were broken into in broad daylight this morning at 09.45 hrs (17th March). The alarm was triggered but the culprits got away unseen!!!

Damage to the locks and bolts has occurred and anything taken is to be assessed. **Dave Lewis**

**HiPete,** Would you be kind enough to put the following in the Chronicle for me please.

**Aston Abbotts and Cublington Ladies Club.** Due to the seriousness of the present situation and because we should follow the Government guidelines it has been decided to cancel the April, May, June and July meetings. I hope that by September we may all be able to get back to normal living and to this end perhaps we can meet again on September 17th at 2.30pm in the Village Hall in Aston Abbotts. Should there be reason not to get together I am sure you will agree we should delay further. I will keep you posted. **April Gilbert.**

**Dear Pete** I am just in the process of organising the Pace Big Walk 2020. The 2020 Big Walk routes take in the Ridgeway Trail between Watlington and Wendover. There is a choice of three routes:

18m - Watlington to Wendover

12m - Chinnor to Wendover

6m – Princes Risborough to Wendover

Registration will take place at John Colet School, Wendover and parking will be available. After registration, walkers will be shuttled to their chosen starting point by coach. £15 registration fee - You will get:

- A Big Walk t-shirt
- Coach transfers
- Water, snacks and plenty of motivation en route
- Refreshments, snacks and a warm, celebratory welcome at the end of the walk

For the children at Pace walking can be a big challenge, however taking a few tentative steps can lead to greater independence. You can help transform young lives by putting on your own walking shoes and joining us for the 2020 Big Walk. For more information, or to sign up contact Kelly on 01296 616973 or [kelly.houghton@thepacecentre.org](mailto:kelly.houghton@thepacecentre.org) Kind regards **Kelly**

**Hi Pete,** Could you please put a prominent link to the village postie in the next edition of the Chronicle? I've mentioned it recently to several people who have lived here for a few years and who haven't heard of it! I know you've mentioned it before

but maybe it's time for another reminder. Many thanks.

**Deirdre Whyte**

***Done better than that Deidre, Got Phil' to write a piece on it. Ed.***

Hi, We have a FB page but I'm not sure how many are aware of this...could we put something on postie to let people know/remind people in the current climate?? Many thanks

And here is the link to the Aston Abbotts page. You will need to log in to Facebook to view it.

<https://www.facebook.com/groups/1938520789580620/>

**Hey folks !** The Royal Oak is still open until we are told to close ! We are offering a take away service for those in the village who are self isolating ! Give us a call on 07809395453 we will deliver in Aston Abbotts ! Keep safe and look out for your neighbours!

**Teri Gary & Royal Oak crew**



**A J Waring  
Carpentry Services**

All aspects of carpentry & joinery

Doors, windows, wardrobes,  
kitchens & bespoke carpentry

Local & reliable

NVQ Qualified

Established for over 15 years

07468 041680      [ajwcarpentry2@gmail.com](mailto:ajwcarpentry2@gmail.com)





**PostBox**

***postbox@aston-abbotts.co.uk***

Are you getting the **Aston Abbotts information emails?**

The Aston Abbotts Postbox has been running since 2015. It distributes notices from villagers to all Postbox subscribers via email in near real time.

Users have used the Postbox to sell or give away unwanted items, ask for recommendations for local tradesmen, appeal for help with village activities, advertise Church Services, quizzes, meetings, etc.... and much more Posts are moderated, approved and checked for spam. Currently

around a half dozen emails are distributed each week so users are not bombarded with messages.

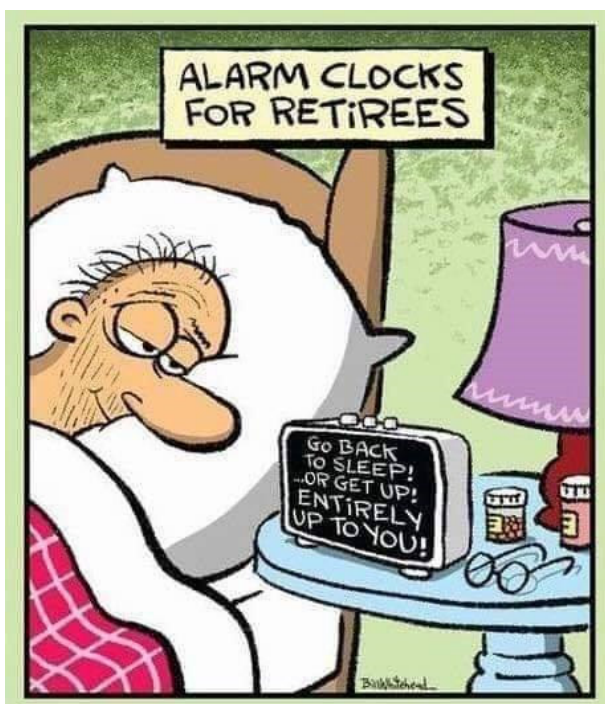
To join the Postbox mail list just send an email to:

***postbox@aston-abbotts.co.uk***

and ask to be added to the list. Your email address is kept private and you can unsubscribe at any time by clicking the link at the bottom of each posting.

You can find out more about the Postbox at the Aston Abbotts website.

---



# ***Notes from the Parish Council – April 2020***



The May election of a new Parish Council has been postponed for a year due to the Coronavirus outbreak. Current councillors will continue to serve until May 2021.

Councillor Judy Hardcastle has resigned as she has moved to Tring. She is thanked for her service on the council, during which she served as Vice Chair and also led the planning sub-committee.

County Councillor Netta Glover stressed the effectiveness of the FixMyStreet portal for getting potholes fixed. Any member of the public can report street problems at

<https://www.fixmystreet.buckscc.gov.uk/>

District Councillor Peter Cooper reported that the budget for the new unitary Bucks council has resulted in a 3.9% council tax increase and there is still a huge backlog in the planning department.

The Parish Council decided to pay for intermediate repairs to The Green and is investigating the issue of ownership (it is currently common land).

Cllr Higgs confirmed arrangements of the VE Day celebrations in May. He will provide details via the Postbox and The Chronicle.

Road sweeping of The Green was confirmed for early March. Quotes for grass mowing and devolved services were reviewed and confirmed. Quotes for removal of the shed on the rec' are to be refreshed now that the weather is improving.

Financial regulations have been approved and can be viewed at the Aston Abbotts website.

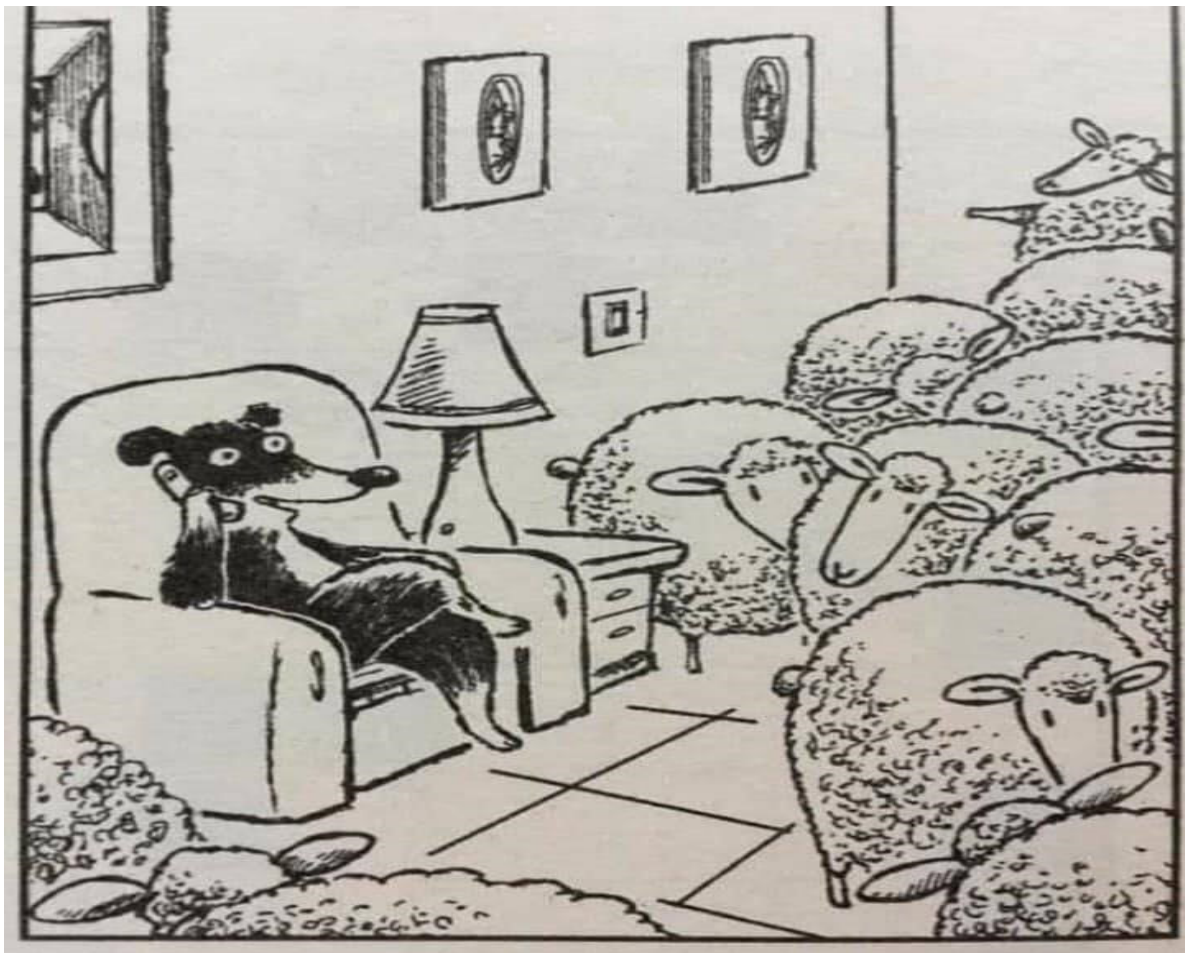
A request for Wingrave Wasps (youth team) to use the recreation ground for Saturday morning football has been approved subject to review after one season. Concerns over parking will be conveyed to the team manager.

The next Parish Council meeting is 7th April. The public Annual Parish Meeting will be on Wednesday 22nd April. (Due to the

coronavirus situation these dates may have to change.)

*This is an informal note of some matters discussed by Aston Abbotts Parish Council. To read the official meeting minutes please go to <http://www.aston-abbotts.co.uk/pcdocuments.htm>.*

You can contact the Parish Council by emailing [clerk@astonabbottspc.org](mailto:clerk@astonabbottspc.org).

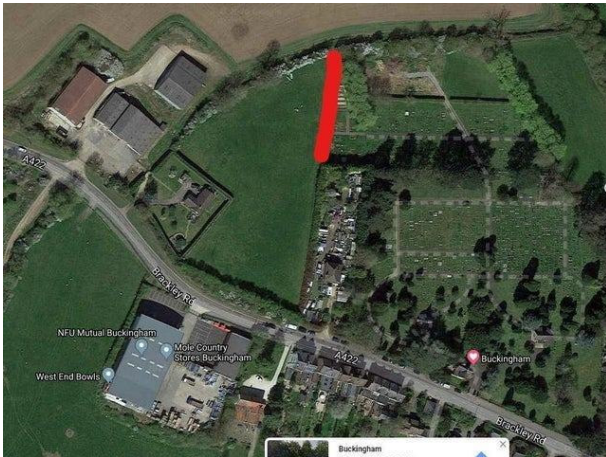


I'm Working from home today



# ***More than 40 bodies found buried under Aylesbury Vale building site***

***Not our village but a piece of news that may be of interest.***



The bodies are all in skeleton form and are believed to have their hands tied behind their backs.

Although Buckingham did once have its own gallows, many hangings and public executions took place in the county town of Aylesbury. But the bodies still could have been transported to Buckingham, say historians.

They were unearthed during ground works for a new development of 72 retirement flats on former farmland off Brackley Road in Buckingham.

But historians and people of the town are accusing the developers,

Brio Retirement Living Holdings of hushing up the massive find.

The company, which is part of Places for People, had to commission an archaeological investigation of the site as a condition of winning planning permission.

The 42 bodies were discovered several weeks ago yet nobody has yet seen the archaeologists' report.

Meanwhile, all the skeletons have been removed, leaving just empty holes in the ground that were their graves. It is not known whether there were any artefacts buried with them that could help date the time of their deaths. The land is close to the cemetery.

Even Bucks County Council's Archaeological Service (BCAS) has not seen the report, though they are aware of the discovery.

Now townspeople are demanding the “cover up” ceases.

“This find is of great historical significance to Buckingham and it should not be hushed up,” said district and town councillor Robin Stuchbury. “I am aware that the bodies were found in December. There were more than 40 of them and they had their hands bound

behind their backs, which infers they were prisoners of some kind.

“They could date from Anglo Saxon times, when there were killings in Buckingham, or from during the Civil War, which also saw casualties. Or they could be criminals who were hanged on the gallows in the town.

“The fact is, we have a right to know. This is part of our history.”

A spokesman for Bucks County Council said: “We are unable to comment on the archaeological remains discovered at the West End Farm site at present, as we are still awaiting a report detailing the results from the archaeological contractors.”

Analysis of the excavation would include descriptions of any artifacts found in the graves, as well as the skeletons' genders, ages and details of how they died. All of this would help determine who the people were and how they ended up buried together in these farmland mass graves — but

it could be months before BCAS receives such a report,

Brio had been battling since 2016 for planning permission to build on the site, which is near Brackley Road cemetery and currently consists of farmland and old barns. They finally won on appeal last year.

***Does anyone have an update?  
Ed.***







***Saturday 4th April  
Meet at the Village  
Hall 10am***

## ***Aylesbury traffic named as EIGHTH worst in UK for commuters in 2019***



Aylesbury's nightmarish traffic.  
And we're not even a city!!

In an article published in the I  
Newspaper on Saturday, a graphic  
was published showing how many  
hours an 'average' commuter  
spent in traffic during 2019.

It may not surprise you to learn  
that London was top of all the  
cities and towns in England,

Scotland, Wales and Northern  
Ireland with commuters spending  
on average 149 hours sat in the  
gridlock.

Belfast came a close second with  
112 hours, followed by Bristol  
(103), Edinburgh (98), Manchester  
(92), Cardiff, (87) and Lincoln with  
an average of 82 hours spent sat  
still.

Aylesbury however, the only town  
on the list - racked up a huge  
EIGHTY ONE hours over 2019 sat  
in deadlock around the town.

The data, provided by Inrix paints  
a shocking picture of the  
horrendous commutes people are  
having into Aylesbury.

Time lost to sitting in jams cost the  
country the equivalent of £6.9  
billion - or £894 per driver -  
according to traffic analysts Inrix.

# VE CELEBRATION EXHIBITION



**Saturday 9<sup>th</sup> May 10am – 4pm**

**Sunday 10<sup>th</sup> May 12pm – 4pm**

**In the Village Hall**

With light lunches on Saturday 12-2 and Teas on  
Saturday and Sunday 2.30 to 4.

(Catering by Francesca)

Please book for lunch. Contact Colin.

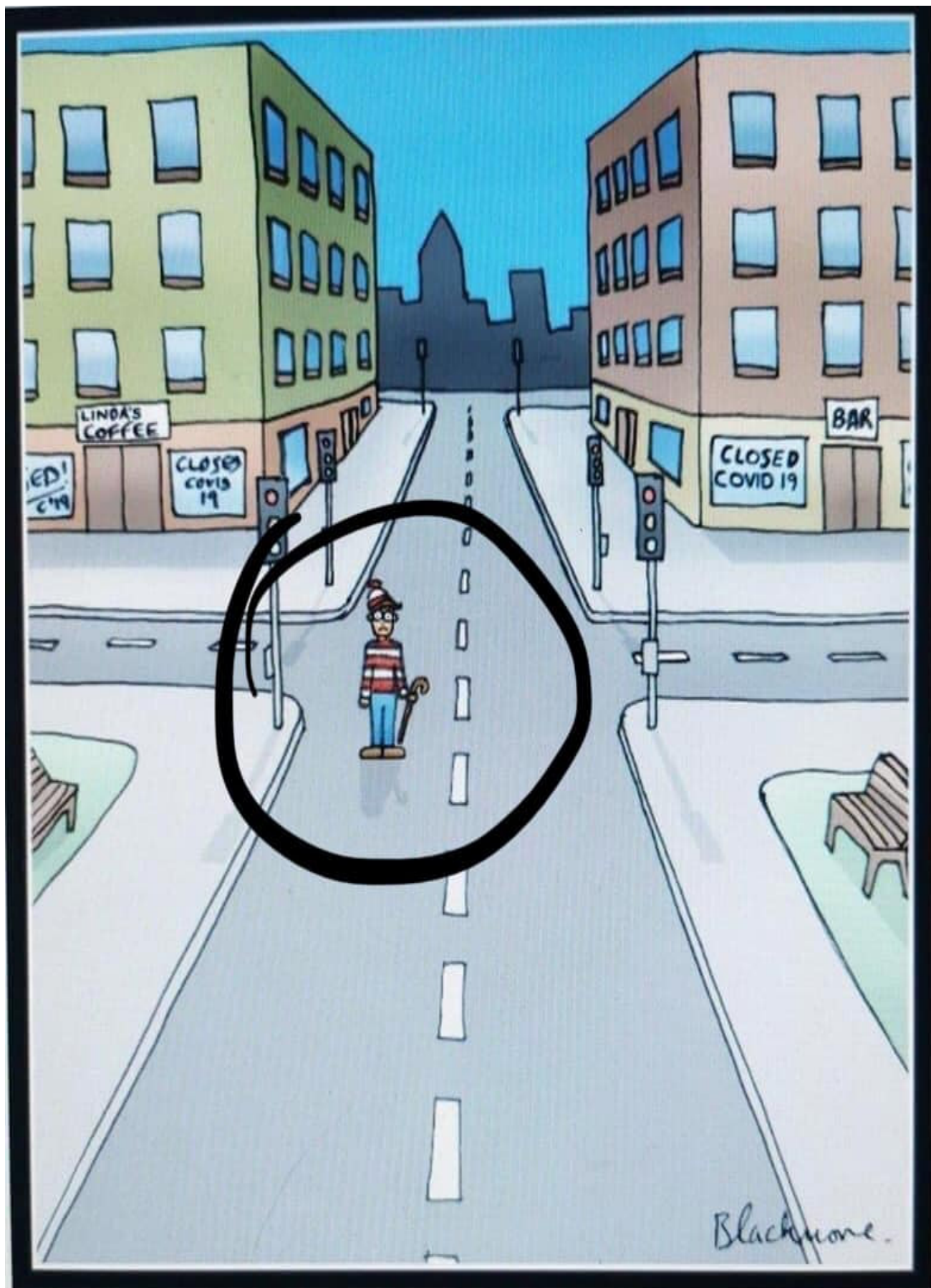
Can you help man the exhibition? Please contact Colin.

Tug of war? We need a team. Contact Colin.

**Colin Higgs – 01296 681343**

***Any offers of help would be welcome. Please contact above***





Where's Wally 2020

## **VILLAGE FETE 25<sup>th</sup> July 2020**



At present, a date for your diaries is the Village Fete on Saturday 25<sup>th</sup> July. If you are interested in

finding out more about what you could do to help with preparations or assisting on the day then please come along.

If you are doing any spring cleaning in the next few weeks please put aside books, bottles and anything that might sell on our famous bric-a-brac stall. We will collect them in the week before the Fete as usual. Thanks.

**David Gray**

(ukdavidgray@gmail.com or 681952)

My three year old girl asked me:

"Where does poo come from?"

I was a little uncomfortable but decided to give her an honest explanation. So I said, "You just ate breakfast, yes?"

"Yes." she replied.

"Well, the food goes into our tummies and our bodies take out all the good stuff, and then whatever is left over comes out of our bums when we go to the toilet, and that is poo."

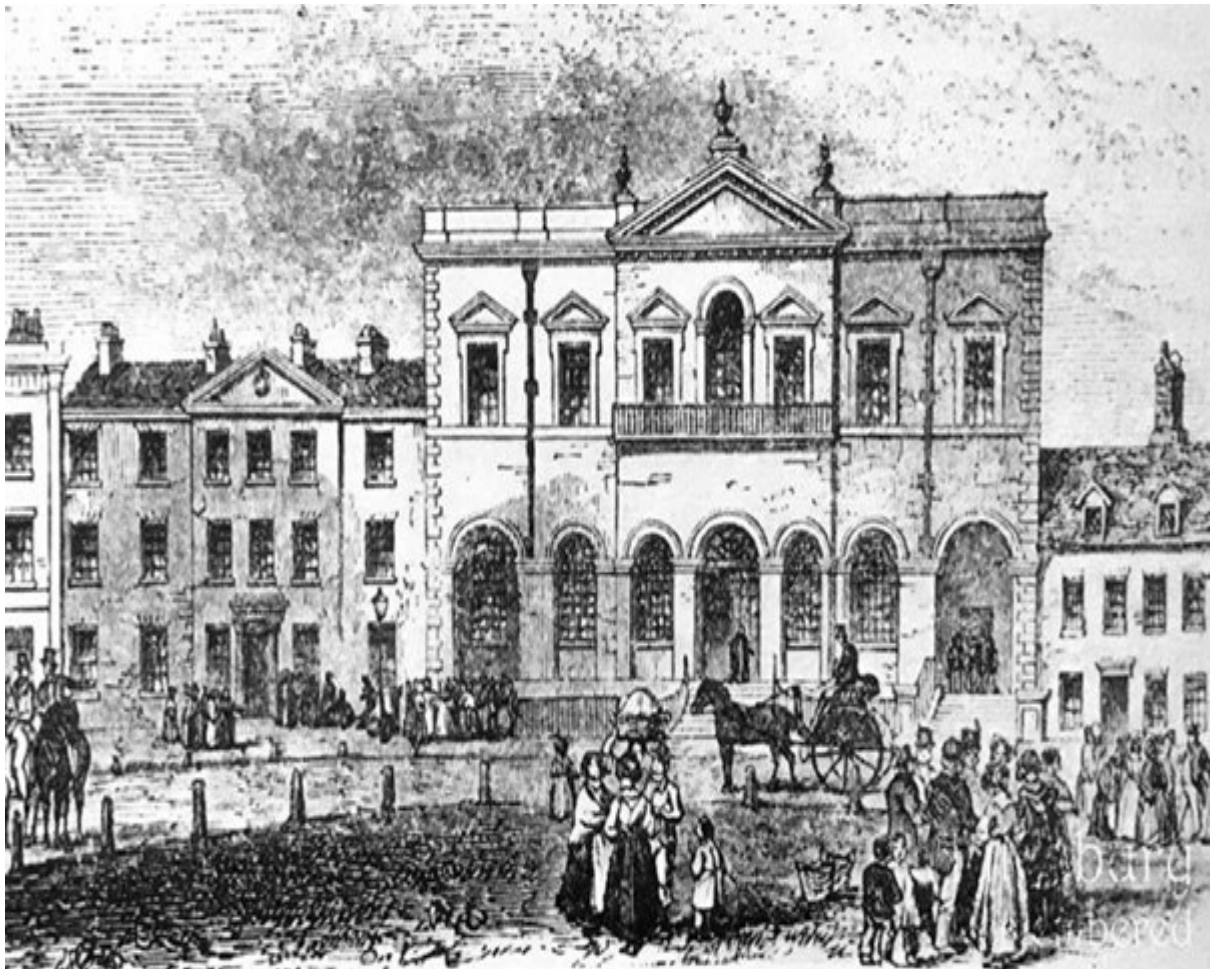
She looked a little perplexed, and stared at me in stunned silence for a few seconds and asked, "And Tigger?"



## ***Focus on Aylesbury. As it was.***

1845 shows the bottom of Aylesbury's Market Square. Dominating the view is Old County Hall with a balcony in front of the first floor windows. It was erected in about 1809 and was used for public hangings. At the time of an execution a scaffold was built in the centre of the balcony and in

the floor was a trap door that the convict stood on. When the noose was securely tied the trap door opened and the convict dropped through the hole to be left hanging for all to see. The last public hanging to take place in the square was in 1845 when John Tawell was convicted of murdering his mistress, Sarah Hart, by poisoning her with prussic acid. The event drew huge numbers of people to the town.



Life in Aylesbury's Market Square at the turn of the 20th century. There is an interesting cross-section of people shown here.



This view of Market Square in Aylesbury shows the celebration of Queen Victoria's Golden Jubilee on June 21st 1887, marking her 50th year on the throne. It was an opportunity for everyone to dress up in their best clothes and decorate their buildings with bunting.



# BUTLERS

## Travel with confidence

- Airport Transfers • Sea Ports • Bus/Train Stations
- London specialists • Business travel
- Employees • Account customers welcome
- Fixed prices - No surcharges



Cars, MPVs & Minibuses.  
Executive cars available.  
CRB checked & local  
authority approved drivers.



We operate 24 hours a day, 7 days a week.

**01296 583 577**

butlerscars@gmail.com | www.butlerscars.co.uk



## the nail barn

FABULOUS FINGERS AND TOES

Shellac manicure or pedicure	£25.00
The Gel Bottle Inc manicure or pedicure	£25.00
Vinylux manicure or pedicure	£20.00
Nail art (per nail from)	£1.00

Over 150 colours and hundreds of nail designs available.

Professional studio in a beautiful and tranquil village setting in Aston Abbots.

**07857 667474**

**hello@nailbarn.co.uk**

**www.nailbarn.co.uk**







## ***Services at Saint James Church - Aston Abbotts April 2020***

***Following advice from the Government and the Church Authorities we  
are putting all Church Services on hold until further notice.***

***Our Beetle Drive on 24<sup>th</sup> April is under review, we will keep you  
informed.***

### **100 Club Draw. March 2020**

***1<sup>st</sup> prize, £50 Peter Shorrock.***

***2<sup>nd</sup> prize, £10 Mark Davison***

**Driver Carries No Cash  
HE'S MARRIED**

# ***WHERE THERE IS LOVE, THERE IS HOPE!***

***A note from your village church – St James the Great, Aston Abbotts***

***In these extraordinary times, we must take extraordinary action!***

***If you are in isolation and need any kind of assistance from the church,***

***please call ...CAROLINE LANE tel: 681373***

***If you are worried and would like someone to talk to from the church,***

***please call...CAROLINE ABEL SMITH tel: 681001***

***We are praying for the care of the whole of our community.***

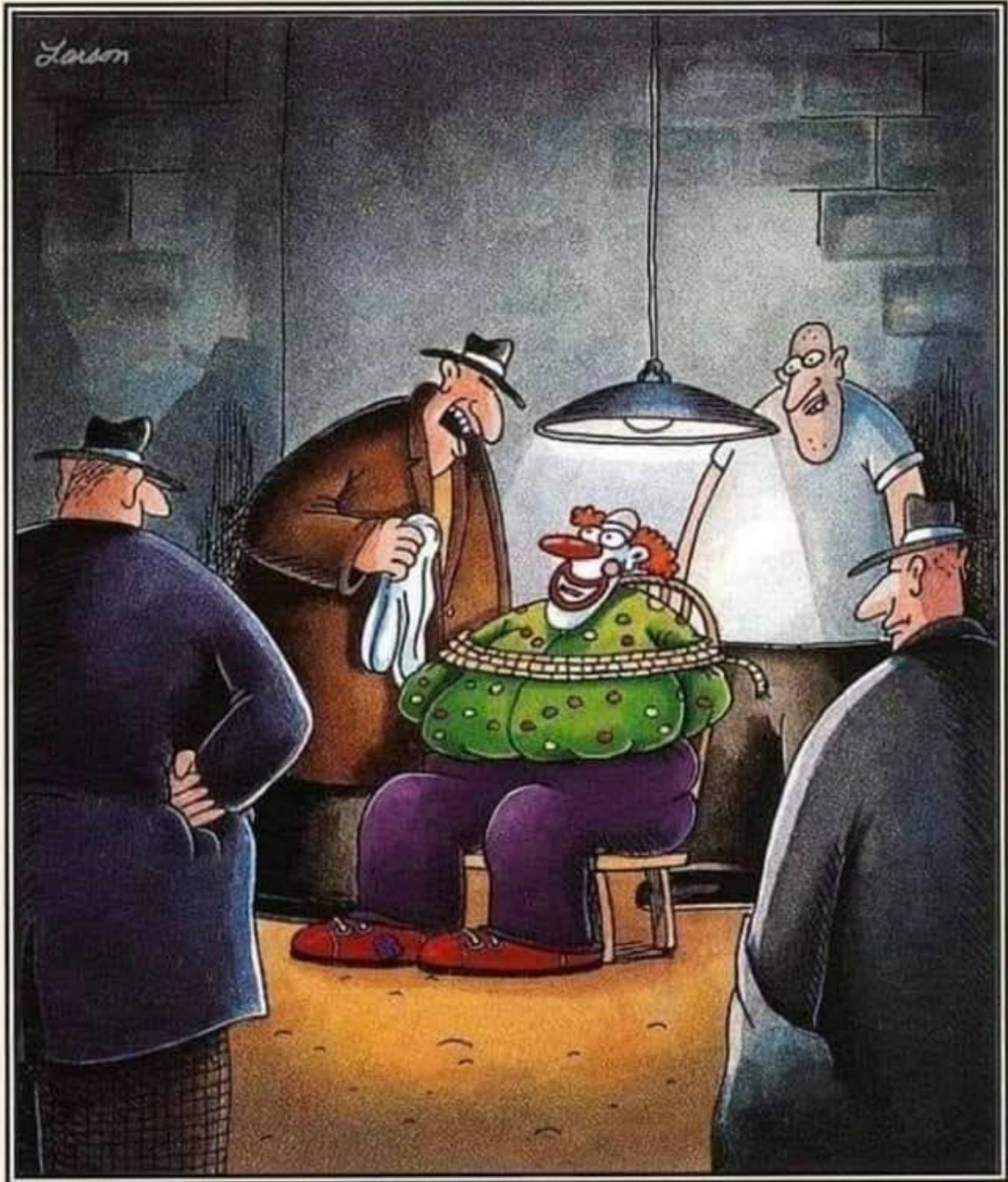
***We are praying for this pandemic to cease as soon as possible.***

***We are praying for a cure to be found fast.***

***Love your neighbour as yourself! Mark 12:31***



12/26/94



"The *first* thing I'm gonna do is wipe that smile off your face!"



## ***ALLOTMENT DIARY***

The only bit of good news I can give you is that since, thanks to Covid-19, it looks as though I shall have bugger-all else to do for the next 4 months, I shall have plenty of time to spend on my allotment!

Regular readers of my Allotment Diary (if there be any) may remember that a few months ago, I mentioned that I was proposing to get rid on my now largely non-productive raspberry canes. The appalling wet weather in February and March frustrated my ambition to make a start on this, and I have only just begun to do so. Those of you who have grown raspberries will know that raspberry plants propagate by sending out suckers underground, which then sprout and turn into new plants. This is great, but it does mean that

weeding rapidly becomes almost impossible, since the ground is covered by a network of existing roots, growing bigger, and these suckers. As a result, other weeds take root, and also grow bigger, adding their roots to the tangle of roots which already exists.

On the allotments in our village one weed which is unfortunately very common is squitch or couch grass. For the benefit of those who are not acquainted with this weed, it is a type of grass which has a very pale, almost white, root; which frequently forks into side shoots. I can remember my late wife, Clare, who was a very keen gardener, telling me that if one left a small part of the root in the ground, it would survive, and grow into a new clump of grass. My experience with my allotment has confirmed the truth of that. Unfortunately, it is very prevalent in my old raspberry patch.

This means that quite apart from the problem of digging up a tangle of roots, I also have to try to remove the squitch roots in their entirety. I am failing. I am probably getting up about 90% of these

roots, but will have to keep digging up the new growth of squitch which will undoubtedly appear among my vegetables. (However, as I started of by saying, I shall have plenty of time to do so!) All this has meant that I will only be able to remove about half of the raspberry canes this spring. I have tried to leave the new growth, in the hope that these plants will produce a small crop of raspberries before they go to that big allotment in the sky.

I had also covered a small area of my allotment (where there used to be an even older raspberry patch) with polythene over the winter, to try to kill the weeds that had grown there: this time largely nettles. At the time of writing, I have not yet tried to dig this area, but suspect that I will have the back-breaking job of digging up old nettle roots, to make sure they do not come back to life again. (Nettle roots are

not as bad as squitch, but they are a pretty good second!)

The more general allotment news is that thanks to Simon Guy's negotiating skills, we have a plentiful supply of horse manure, of which most allotmenters have been taking advantage. Given a half-decent summer we should all be getting bumper crops this year, with the benefit of this manure and the over-abundance of rain in the late winter. I have spread this manure over my patch, and am waiting for my son, Adam, to rotavate the plot for me, so that I can put in the first vegetables – first early potatoes and parsnips. He has been putting the job off to give the ground a chance to dry out, but by the time you read this, I am confident the ground will be rotavated, the new season's planting will have begun!

**PETER SHORROCK**

Apology from a Hospital...

## ***Annual Advertising rates***

Full Page Inside	£90
Half Page Inside	£50
Quarter Page	£35
One Offs Full	£20
Half	£15
Quarter	£10

Send copy and cheque payable to 'The Chronicle' to John Whyte  
14 Bricstock, Aston Abbotts Bucks HP224LP.

**Reminder of deadline for Chronicle contributions. Deadline is  
24th of each month for the following month unless otherwise  
stated. Send to articles to: [editor@aachronicle.co.uk](mailto:editor@aachronicle.co.uk)**

***Handyman.***

***Electrical, Plumbing, Kitchens, Bathrooms, Floors, Doors, Shelves,  
Tiling, Fitted wardrobes, Maintenance, Small Building Work.***

***Anything considered. Free Estimates***

***Chris Dowell (01296) 681109***

***Parrotts Butchers Whitchurch.***

***We need you to support our local businesses***

# Painting & Decorating

Brighten your Home with a Professional Decorating Service

Clean & Tidy Workmanship Guaranteed



To Discuss Your Idea's & Arrange

A Free Quote Contact: Adrian



Tel: 01296 688429

Mobile: 07986 597013

E-Mail: [bystra@btinternet.com](mailto:bystra@btinternet.com)

## Aston Abbotts Motor Engineers (ITG)



**Servicing, Repairs & MOTs Free Collection & Delivery**

**(Within 10 miles of Aston Abbotts) Friendly & Reliable**

**My passion is my work with 35 years experience. Very fair rates**

**Call Richard Upton**

**07769668672**



## ***Who's Who when you need them.***

Chair Parish Council Jane Baylis 681042  
Vice Chair Parish Council. Planning. Judy Hardcastle 688070  
Councillor Kate Curry 681137  
Councillor & Street Lighting Highways & Transport Colin Higgs 681343  
Councillor Recreation Ground Phil' Spooner 681544  
Councillor Heather Langdon 688946  
Councillor Jane Plested  
Parish Council Clerk Frank Post 668206  
County Councillor Netta Glover 688357  
Vicar Philip Derbyshire 01525240287  
Church Warden Caroline Abel-Smith 681001.  
Church Secretary Caroline Lane 681373  
100 Club Treasurer David Gray 681952  
Bingo Pam Dixon 681626  
Book Club Sally Palmer 681152  
Chronicle Editor / Quiz Night Pete Lucas 681387  
Chronicle Advertising Enquiries. John Whyte johnwhyte2311@gmail.com  
Chronicle Distribution Sally Palmer/Jill Wenble 681152/681877  
Village Hall Hire Liz Barlow 682605  
6.30 Club Andy Bystra 681690  
Gnomes Carol Spooner 681544  
Ladies Club Jackie Whyte 681624  
Rambling Club & Whist Drive Colin Higgs 681343  
Baby & Toddler Group Kim Gayler 681123  
Royal Oak Pub & Restaurant Teri Moulton 681262  
Milkman Alan 07791885612  
Community Services  
NHS Direct 24hr Advice 111  
Doctor Out of hours Surgeries 331511  
Stoke Mandeville Hospital 315000  
Police Non-Emergency 101  
AVDC 01296 585858 Bucks County Council 01296 395000  
Citizens Advice 08701264056  
MP John Bercow 714240  
Refuse Collection 585510  
Anglian Water 385995  
Pre School Wingrave 681127  
Post office & shop Wingrave 682964

# Travel Impressions

*A World of Experience*

## Tring's Independent Travel Agent

**We're here to help!**

Come in and talk to us about your holidays plans.  
We are located behind Costa Coffee on Tring High Street.



### Travel Impressions

*A World of Experience*



**01442 890265**

[enquiries@travellimpressions.co.uk](mailto:enquiries@travellimpressions.co.uk)  
[www.travellimpressions.co.uk](http://www.travellimpressions.co.uk)

Suite 4, George House, 64 High Street, Tring, Herts. HP23 4NF



# Buckland Landscapes

Nursery Tree sales Planting Moving Landscape supplies

Rooted in more than 20 years of landscape design, construction and maintenance experience, Buckland Landscapes Ltd can bring creativity and expertise as well as long term maintenance solutions to your landscapes.

In addition, we have our own 50 acre open grown tree nursery based in  
Bushmead Road, Cublington, Nr Aylesbury.

Our website is comprehensive and very user friendly. Please take a look to see the full range of services we are able to offer.

Whether you require garden design, hard or soft landscaping, or garden maintenance, please do not hesitate to contact our office to arrange a consultation on: 01296 680350 or email: [info@buckland-landscapes.co.uk](mailto:info@buckland-landscapes.co.uk).

01296 680350

[info@buckland-landscapes.co.uk](mailto:info@buckland-landscapes.co.uk)

[www.buckland-landscapes.co.uk](http://www.buckland-landscapes.co.uk)

Home Farm, 61 The Green, Aston Abbots, Aylesbury, Bucks. HP22 4LY





## **EXECUTIVE Private Hire**

***Friendly local family business. Est: 1986.***

Mercedes Benz Fleet

Experienced Professional Local Drivers

Airport & Cruise Terminal Meet & Greet

Theatre Trips

Specialist London Drivers Upon Request

Wedding & Prom Service

Cars & Drivers Licensed by AVDC

All major cards accepted

Office hours: 8am - 9pm Sun - Thu, 8am - 12pm Fri & Sat

**T: 01296 688 739**

**[www.wingcars.co.uk](http://www.wingcars.co.uk)**